



THE PEAK

@ BINTULU PARAGON

34-storey Condominium

34层高共管公寓

INVEST IN THE FUTURE, NOW.

Naim The Peak is a part of Naim Bintulu Paragon - the largest integrated development in Bintulu comprising commercial, residential and hospitality components. The vibrancy and success of Naim Bintulu Paragon is accentuated by SCORE (Sarawak Corridor of Renewable Energy).

Bintulu is the epicentre of SCORE and poised to highly benefit from all the investments channelled into it. SCORE is expected to attract more than RM300 billion worth of planned investments and already the positive effects are visible. Bintulu is seeing an influx of workers and good capital appreciation in properties.

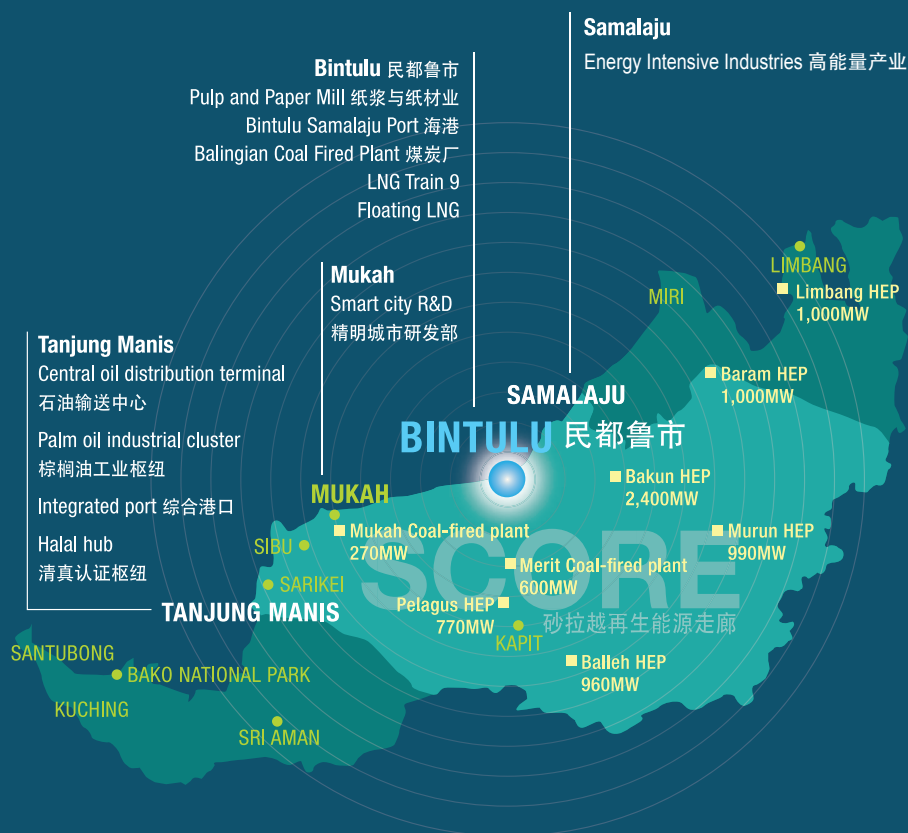
Opportunities never strike twice, so invest in the future at Naim The Peak, today!

现在投资 · 放眼将来

纳英 THE PEAK 公寓乃是民都鲁市当地最大型的综合性发展地区 - 纳英民都鲁百乐城的其中一员。纳英民都鲁百乐城集合了住宅、商业、零售、酒店业于一地，其显赫地位受惠于 SCORE (砂拉越州再生能源走廊) 落实后所带来的繁荣昌盛。

民都鲁市作为砂拉越再生能源走廊(SCORE)的中心点而受益匪浅，并已成功的吸引了3千亿万马币的投资额。快速的经济增值已让民都鲁市一跃成为最具价值的新兴城市，大量的人力涌入也持续提高了当地的产业价值。

时机瞬间即逝！别再犹豫，今天就投资于纳英 THE PEAK，运筹决策您的未来。



Source: RECODA 2012, The Sarawak Government official portal and various newspapers/bulletins
资料来源: RECODA 2012, 砂拉越州政府官方网站与各类报纸/新闻简报

BINTULU **PARAGON**
民都鲁百乐城



Artist Impression

PHASE 2 第2期工程

PHASE 1 第1期工程

THE NEW CENTRAL BUSINESS DISTRICT OF BINTULU

Upon completion, Naim Bintulu Paragon will be a self-sustained hub offering the opportunity to live, work and play, all at one premier address. Shop and dine at the trendy Naim Street Mall, start or expand your business with our Naim SOVOs (Small Office Versatile Office) or simply choose to live in Sarawak's tallest condominium.

Naim Bintulu Paragon is complemented by an adjacent green lung, the proposed Bintulu Festival Park which will be developed by the Local Authority. Fairfield by Marriott Bintulu Paragon Hotel is also within reach for those looking to spend their weekend getaways or perhaps looking for an event venue to host a function.

民都鲁市崭新的商业区

纳英民都鲁百乐城将是一个自给自足的崭新都市，把您的工作与娱乐等生活体验都集合在这个首选的地点吧！您将能尽享时髦商业街区的美食与购物乐趣，充分利用我们的纳英SOVO（多功能小型办公单位）扩展您的事业，或者就简单地选择砂拉越州最高的公寓作为您的落脚处。

拟议中的民都鲁市绿肺－民都鲁市公园也将为纳英民都鲁百乐城锦上添花。出色的设计概念加上壮观的，建筑设计毫无疑问的纳英民都鲁百乐城将一跃而成民都鲁市的崭新都会。而且，民都鲁百乐城万枫酒店是让那些想要来个周末小度假或是举办活动的地方首选。



Plan your stay or learn more about Fairfield by Marriott Bintulu Paragon Hotel today! Scan the QR Code below to get started





THE PEAK

@ BINTULU PARAGON



starproperty.my
AWARDS 2019
MERIT

THE BORNEO STAR AWARD
(BEST EAST MALAYSIA DEVELOPMENT)

NAIM
THE PEAK





Grand Lobby
宏伟的大堂

LIVE THE HIGH LIFE

尽情享受高雅生活

@ Naim The Peak Condominium

Be the envy of others. Live in Sarawak's tallest condominium and savour the good life!

With a myriad of conveniences and facilities at your doorstep, expect more than just condo living at Naim The Peak:

- Full condominium facilities at podium level
- Multi-tiered security and card access system
- Exclusive 261 units with a range of built-ups from suites, studio units and duplexes, to penthouses
- Next to Naim Street Mall – a host of F&B outlets and shops awaits you
- Adjacent to Bintulu Festival Park – the hotspot for all your recreational activities

享受优质高雅生活，入住砂拉越州令人仰慕的最高公寓！

除了无数的便利设施近在咫尺，纳英 THE PEAK 还提供您各种优势例如：

- 一应俱全的公寓设施尽在平台楼层
- 多层次保安与通行卡系统
- 独家的 261 个单位，单位设计与面积从套房，工作室至复式豪华套房单位
- 毗邻纳英商业街区 – 各式餐厅与商店等着您的光顾
- 毗邻民都鲁市公园 – 您休闲活动的大好地点



A function hall to cater for events
多用途礼堂



NAIM 'The Peak' Swimming Pool
纳英 'The Peak' 泳池

ALL THE FACILITIES
AND MORE,
JUST FOR YOU.
为您贴心而设的：

Swimming pool 游泳池

Kid's pool and playground 儿童泳池及乐园

Gazebo 凉亭

Look-out point 瞭望台

BBQ area 烧烤区

Gymnasium 健身房

Fully functional multipurpose hall 多用途礼堂

Covered drop-off entrance 大厅入口落客处

24-hr security 24小时保安系统

Unwind like never before in the lavish pool 豪华级泳池

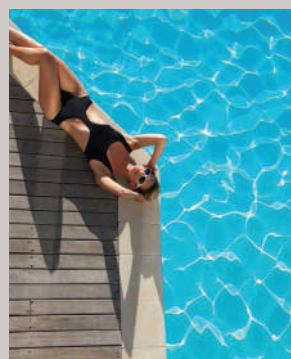
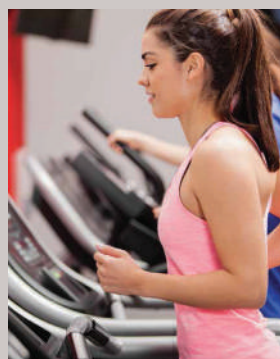


Perspective: NAIM 'The Peak' Recreations Deck
纳英 'The Peak' 休闲甲板概念图



24-hr security assures a safe haven
for your loved ones

全天候保安服务 - 确保您与家人安枕无忧



A range of facilities to complement
your lifestyle

设施齐全以迎合您的生活方式

NAIM 'The Peak' Show Unit
纳英 'The Peak' 展示单位



An iconic tower – The tallest condominium in Sarawak
拔地而起的地标 – 砂朥越州最高的共管公寓



CHANGING THE SKYLINE, CHANGING THE WAY YOU LIVE.

Picture yourself chilling out at home after you escape a hard day's work. Swim, rejuvenate in the jacuzzi, sweat it out at the gym or simply relax at the poolside cabanas. Stroll over to the Naim Street Mall for dinner or catch-up with your buddies over a cuppa.

Families will find Naim The Peak a new dimension of living. Everything is within reach, within your own home. Kids will love the facilities deck. Parents get to savour precious moments seeing their children growing well in a conducive environment.

Whether you are single, a couple or a family, this is the high life at Naim The Peak.

人居高处，视野无限生活方式 提升至另一层次

营营役役了一天，是时候为自己充电。泳池畔设有凉亭小屋，您大可悠闲的倘佯于池畔或是于按摩池小憩，享受健身运动带来的压力解放，之后漫步纳英商业街区，与友伴享受晚餐或一杯在手谈天说地。

纳英 THE PEAK 给您与家人的生活一个全新的层次与体验。一切都触手可及，小孩会喜欢这里的游乐设施，大人也欣慰自己的孩子能在如此美好的环境成长。

无论您是单身，新婚或是一家大小，纳英 THE PEAK 都能给您最好的一切。

THE UNRIVALLED LOCATION OF NAIM BINTULU PARAGON

- Strategically located at the heart of Bintulu town, beside the proposed Bintulu Boulevard on the south and a major roundabout on the east
- Maximum exposure to passing traffic particularly from the south of Bintulu
- Surrounded by dense residential and mature commercial hubs
- Easily accessible via the proposed Bintulu Boulevard leading to the west, roundabout leading to the east and a proposed circulation road leading to the north
- The upcoming Bintulu-Jepak bridge crossing Kuala Kemena expected to be completed in 2023 will improve accessibility to and connectivity with the development

无可匹比的地点

- 策略性地点：位于民都鲁市中心黄金地段，向南毗邻拟议中的民都鲁大道，东面有主要交通圈
- 纳英民都鲁百乐城享有最高的曝光率，尤其是来自南方的人流与车流
- 环绕四周的是密集的住宅区与发展成熟的商业枢纽
- 向西可轻易抵达拟议中的民都鲁大道，东面有主要交通圈衔接，北面可通往拟议中的循环公路
- 横跨Kuala Kemena河的Bintulu-Jepak 大桥即将在2023年竣工，届时将促进本发展产业的交通链接更完善



Bintulu

+6 086-343881

Kuching

+6 082-416288

Miri

+ 6085-491000

NAIM LAND SDN BHD

Registration No. 199391008478 (Company No. 261213-T)

Bintulu Sales Gallery:

B-G-1, Old Airport Place, 97000 Bintulu, Sarawak.

Kuching Sales Gallery:

Rock Commercial Centre, Jalan Green, Kuching, Sarawak.

Miri Sales Gallery:

Lot 6180 (Naim Clubhouse), South Lake Permyjaya, 98100, Miri, Sarawak.

www.naimproperties.com.my

99
YEARS
LEASEHOLD

99年期限房契



www.facebook.com/naimproperties

*Terms & conditions apply

BINTULU • Developer's License: L1940/KP/HD/08/098-R5 • Validity: 02/01/2020 - 01/01/2022 • SPA Approval Plan No.: No.9D (SPA 5-12) B1-31/31 • Sales Permit: P2061/KP/HD/08/098-R5
• Validity: 02/01/2020 - 01/01/2022 • The Peak • Building Plan: (40) BDA-8/1/AB-2203(S)(37STOREYCONDO) • Expected Date of Completion: End of 2018 • No. of Units: 261 units • Price
Range : RM318,888 – RM1,082,888

This brochure, plans and any marketing material does not form part of any contract and is not to be treated as an offer. It serves as an information only and disclosed to the prospective purchasers without responsibility to the Developer and are not intended to be relied on. All renderings are an artist's impression only. The designs, size and layout are indicative only and may be subject to change. Any areas, measurements or distances shown in any text or plan are approximate only and subject to variations, modifications and substitutions as may be required by the relevant authorities or the Developer. The Developer reserves the right to make changes in the interest of improving the overall scheme. While reasonable care has been taken in preparing this brochure, plans and any marketing information, the Developer cannot be held responsible for any variations or inaccuracies. Any buyer must satisfy himself by inspection or otherwise as to the accuracy of any information given. All sales remain subject to contract.