

INCORPORATING ESG EXCELLENCE AT DAUNAN WORLDWIDE

Embark on a journey with us at Daunan Worldwide, where the fundamental principles of Environment, Social, and Governance (ESG) are seamlessly woven into the fabric of our township. Our commitment to sustainability is showcased through the use of eco-friendly and renewable materials in construction, ensuring a reduced environmental impact and a greener future.

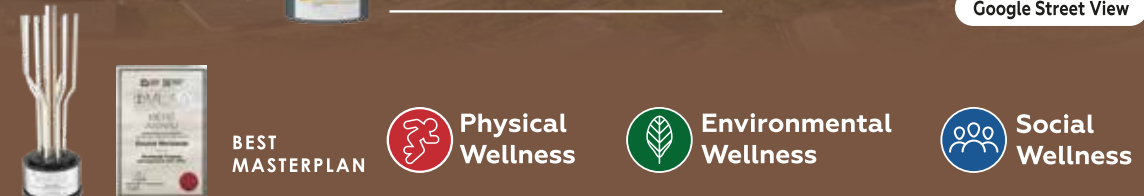
Imagine leisurely walks through lush green spaces, tranquil lakes, and meticulously designed recreational parks. These features not only elevate your lifestyle but also contribute to the overall well-being of our vibrant community. At Daunan Worldwide, we're not just shaping a better future for our residents – we're creating an enduring legacy that resonates with all.



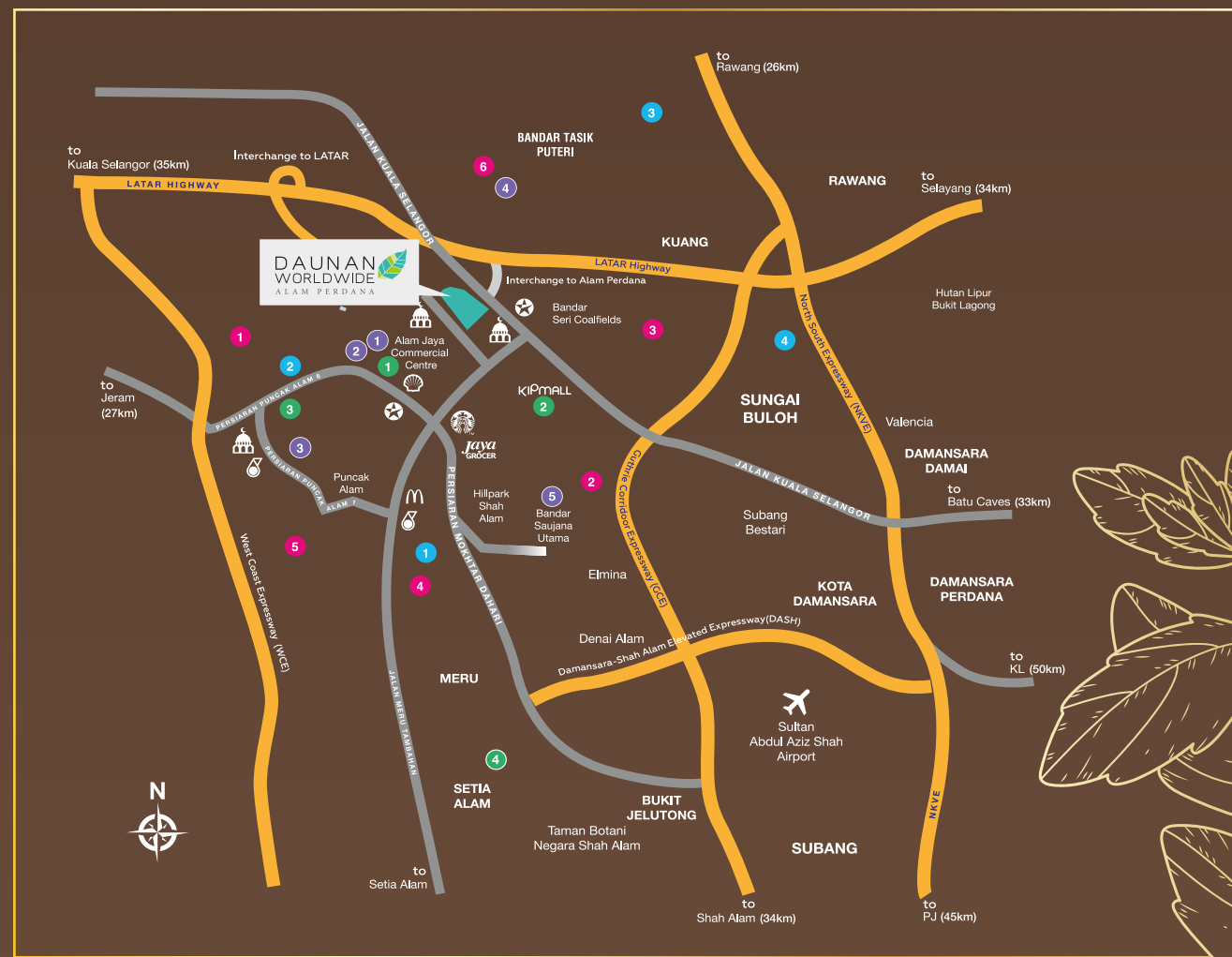
2023 / 2024
BEST WELLNESS TOWNSHIP DEVELOPMENT



Google Street View



Daunan Worldwide, a township meticulously designed and constructed for the holistic welfare of its residents, based on 3 Core Principles of Wellbeing. This concept has been acknowledged with the award for Best Masterplan by the Malaysia Landscape Architecture Awards (MLAA).



Easy access via major highways LATAR, GCE, PLUS, DASH & WCE
Coming soon (ECRL) Puncak Alam

A Bright Start for Your Children's Future

Your children's education needs are conveniently located, from primary schools (S.K & S.M.K Puncak Alam) to the higher-learning institution (UiTM Puncak Alam)



Visit our Sales Gallery



Visit our website

Having Peace of Mind Matters

All of your family's necessities (medical centres, clinics, police station) covered within the vicinity



Persiaran Daunan 1, Daunan Worldwide Alam Perdana, 42300 Bandar Puncak Alam, Selangor Darul Ehsan.

Essentials & Recreational for Your Daily Needs

Hypermarkets, grocery stores, banks, and various other commercial developments are just a short drive away

Visit our website
daunanworldwide.com.my

Another Prestigious Development by



Worldwide Property Management Sdn. Bhd. (419800-K)
Meru Worldwide No. 7, Persiaran Sultan Laman Seri,
Business Park, Seksyen 13, 40100 Shah Alam, Selangor

03 9212 0387
worldwideproperty.com.my

f YouTube WHB Property



Selasih • Daunan Worldwide • Worldwide Property Management Sdn. Bhd. (419800-K) • Meru Worldwide, Laman Seri BusinessPark, No.7, Persiaran Sultan, Seksyen 13, 40100 Shah Alam, Selangor, Tel: +603 5526 2525 • No Lesen Pemaju: 19727/11-2028/1348/R) • Tempoh Sah: 13/11/2023 - 12/11/2028 • No. Permit Iklan dan Jualan: 19727-04-2027/0297(N/L) • Tempoh Sah: 21/04/2025 - 20/04/2027 • Dibawaskan oleh Majlis Daerah Kuala Selangor BA, 43/DLMADKS 30118/1201642 JLD2 • Hak Milik: Pajakan 91 Tahun (dimat 15/2/211) • Tanah Dianggap Siap: November 2024 • Binaan: Teras • Sekeloa-Sekeloa Keperluan • Tanah ini boleh dipinjamkan, dipajak atau digada selaloh mendapat kebenaran Pihak Berkuasa Negeri • Jenis: Teres 2 Tingkat • Jumlah Unit: 176 • Harga Min: RM799,700.00 Harga Maks: RM1,362,800.00.

IKLAN INI TELAH DILULISKAN OLEH JABATAN PERUMAHAN NEGARA. MAKLUMAT PEMAJUAN BOLEH DISEMAK DI PORTAL: TEDUH.KPKT.GOV.MY

DAUNAN WORLDWIDE
ALAM PERDANA

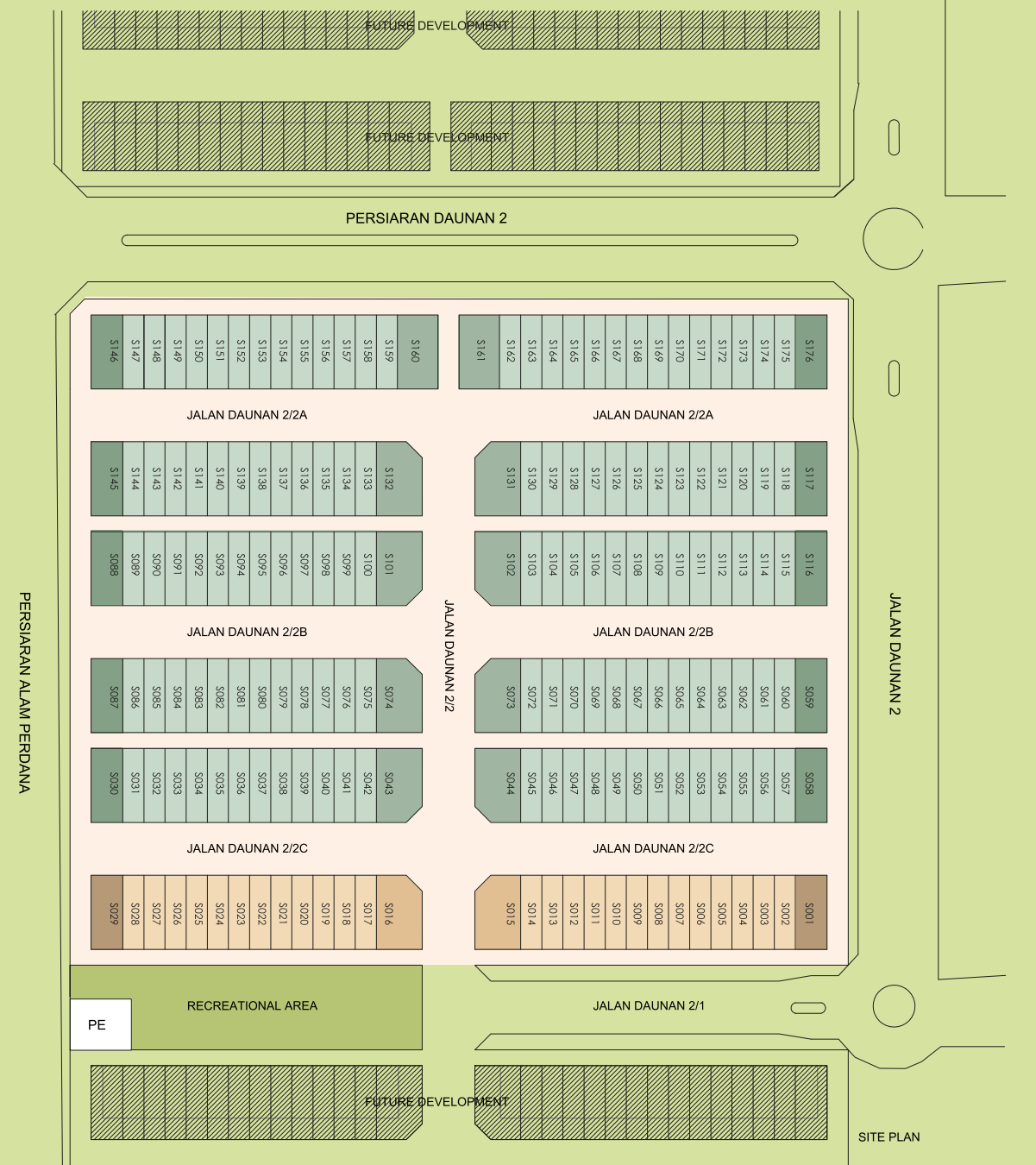
SELASIH

TRANSFORM YOUR SPACE, TRANSFORM YOUR LIFE

SELASIH

2-STOORY TERRACE HOMES | 20' X 70'

Total Units : 176 Units



Legend: Intermediate Unit Type A, End Unit Type A1, Corner Unit Type A2, Intermediate Unit Type B, End Unit Type B1, Corner Unit Type B2

A GREEN HAVEN FOR A HEALTHY LIFESTYLE

Nestled within Daunan Worldwide, Selasih is designed to inspire balanced living with its lush greenery and pristine neighbourhood. Its expansive lake invites you to get active with morning and evening activities, the perfect setting for a healthy and fulfilling lifestyle.

Ideal for those who value an active, vibrant way of living, Selasih is more than just a home - it's a thriving community where well-being and connection come together seamlessly.

CROSS SECTION OF TYPE A (CORNER/END UNIT)

EASY-ACCESS KITCHEN AT FRONT OF HOUSE
A unique layout for more practical living spaces

OPEN TERRACE
A bright and inviting space with ample natural lighting, especially on the ground floor

OPEN INTERIOR SPACE
Minimal partitions for better cross ventilation within the house



Artist's impression

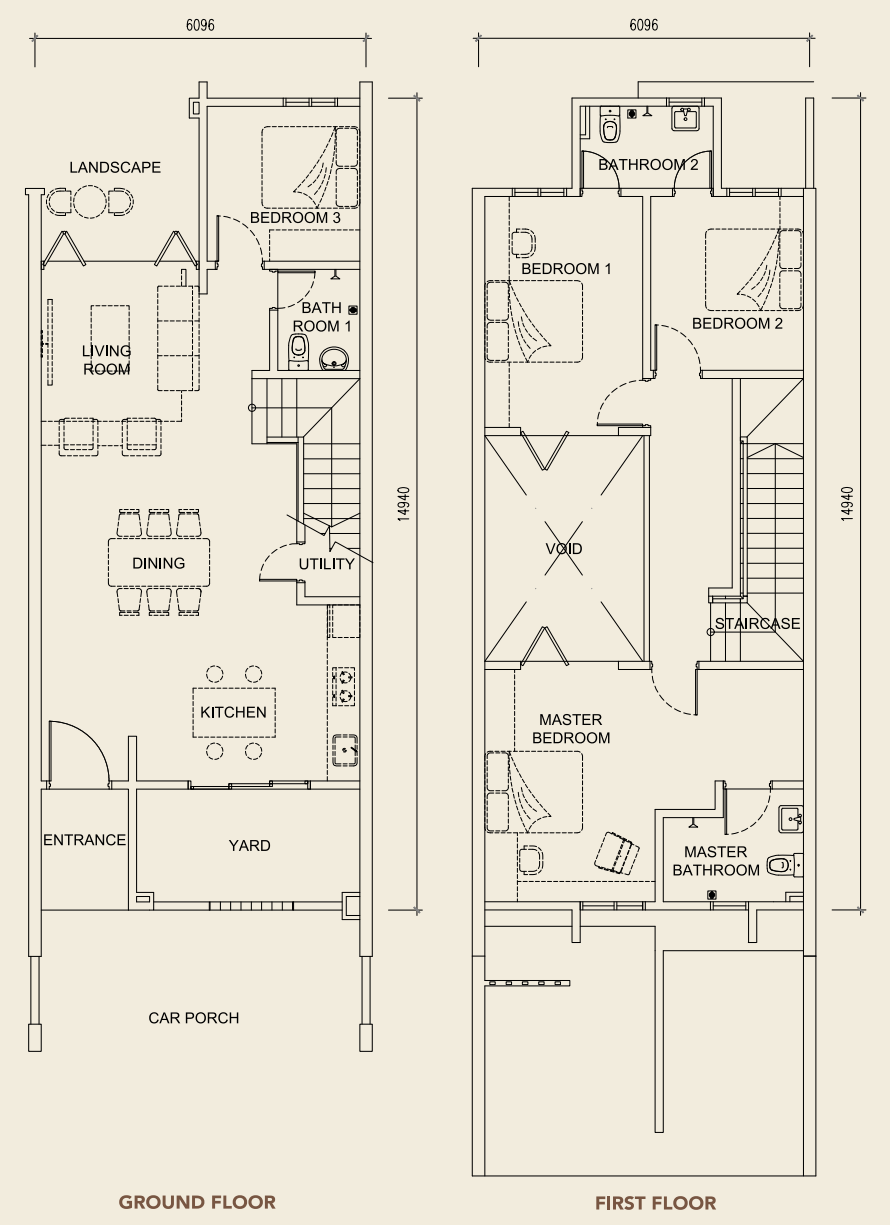
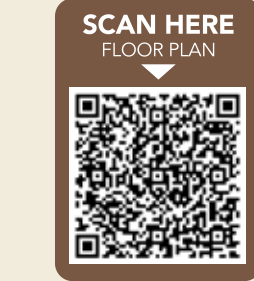
TYPE A FLOOR PLAN

INTERMEDIATE UNIT

4 BEDROOM

3 BATHROOM

1,875 SQFT



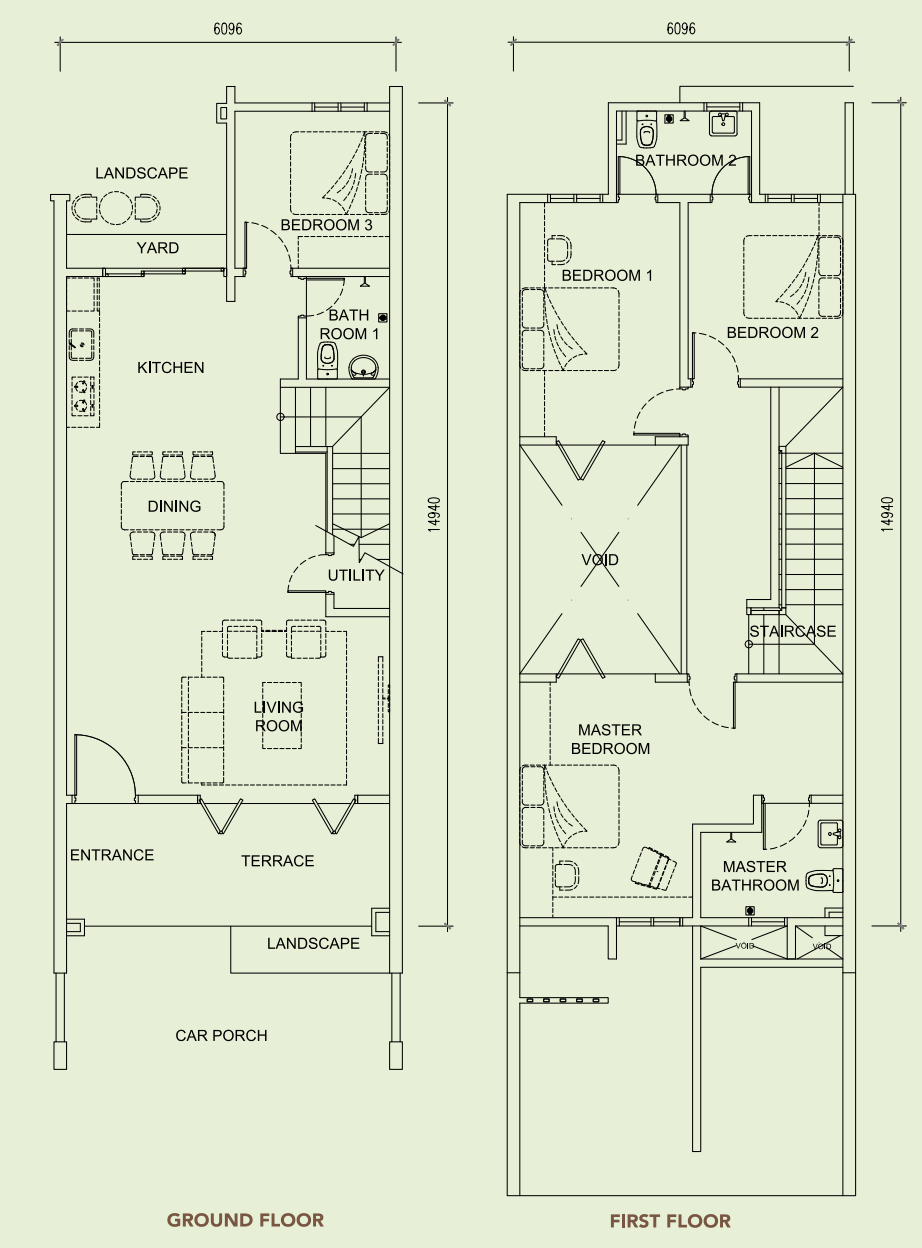
TYPE B FLOOR PLAN

INTERMEDIATE UNIT

4 BEDROOM

3 BATHROOM

1,875 SQFT



Artist's impression

Structure	: Reinforced concrete			
Wall	: Brickwall			
Roofing Covering	: Roof tiles, Flat concrete roof			
Roof Framing	: Lightweight steel trusses			
Ceiling	: Plaster ceiling, Skim coat			
Windows	: Aluminium frame casement window, Aluminium frame casement window with fixed glass panel, Aluminium frame top hung window, Aluminium frame bifolding glass window (For Intermediate Unit)			
Doors	: Timber door, Aluminium frame sliding glass door, Aluminium frame bifolding glass door			
Ironmongery	: Lockset with accessories			
Wall Finishes	: Kitchen : Plaster & paint, Tiles up to 1500mm high			
	: Bathrooms : Tiles			
	: Others : Plaster & paint			
Floor Finishes	: Living Room : Tiles			
	: Dining Room : Tiles			
	: Kitchen : Tiles			
	: Bathrooms : Tiles			
	: Ground Floor Bedroom : Tiles			
	: 1st Floor Bedroom : Laminated timber flooring			
	: Staircase : Laminated timber flooring, plaster & paint			
	: Utility room : Cement render			
	: Car Porch : Concrete imprint			
	: Yard : Cement render			
	: Entrance : Tiles			
	: Foyer : Tiles			
	: Family Area (For Corner/ End Unit) : Laminated Timber Flooring			

		Type A	Type A	Type B	Type B
		A	A1/A2	B	B1/B2
Sanitary & Plumbing	: Water Closet	3	3	3	3
	: Wash Basin	3	3	3	3
	: Shower Head	3	3	3	3
	: Hand Bidet	3	3	3	3
	: Kitchen Sink	1	1	1	1
Electrical Installation	: Light Point	21	23	21	23
	: 13A Switch				
	: Socket Outlet	14	15	14	15
	: Gate Light Point	1	1	1	1
	: Ceiling/ Wall Fan Point	6	7	6	7
	: Air Cond Point	2	2	2	2
	: Water Heater Point	2	2	2	2
	: TV Point	1	1	1	1
	: Fibre Wall Socket	1	1	1	1
	: Auto Gate Point	1	1	1	1
	: Door Bell Point	1	1	1	1

Internal Telephone Trunking & Cabling : Concealed

FILL YOUR HOME WITH JOYFUL MOMENTS WITH YOUR FAMILY!

