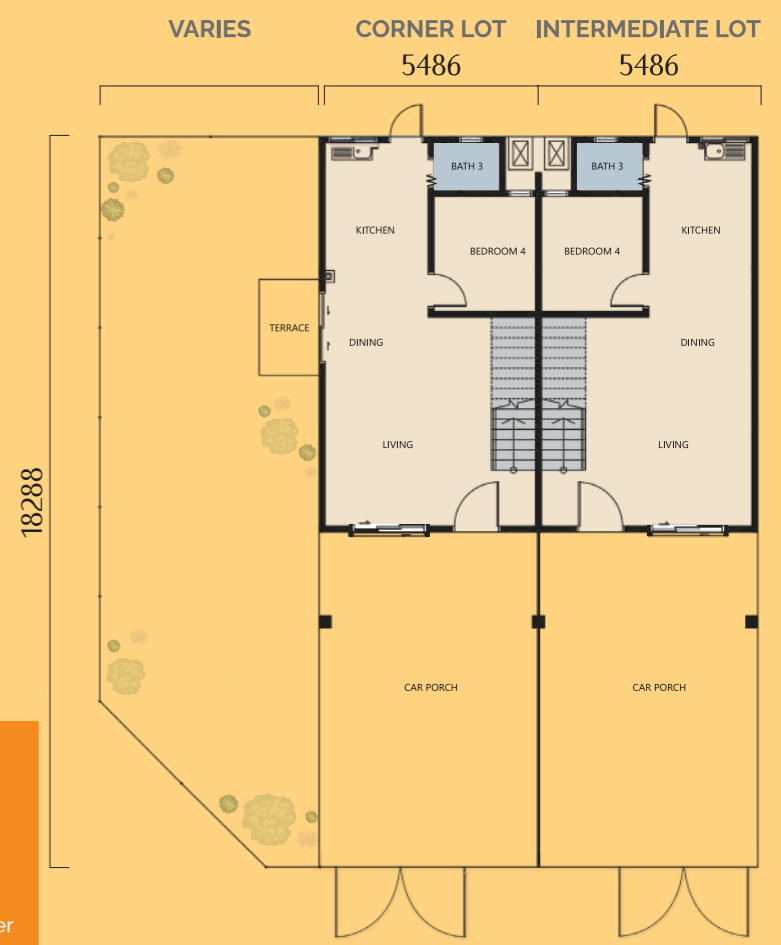




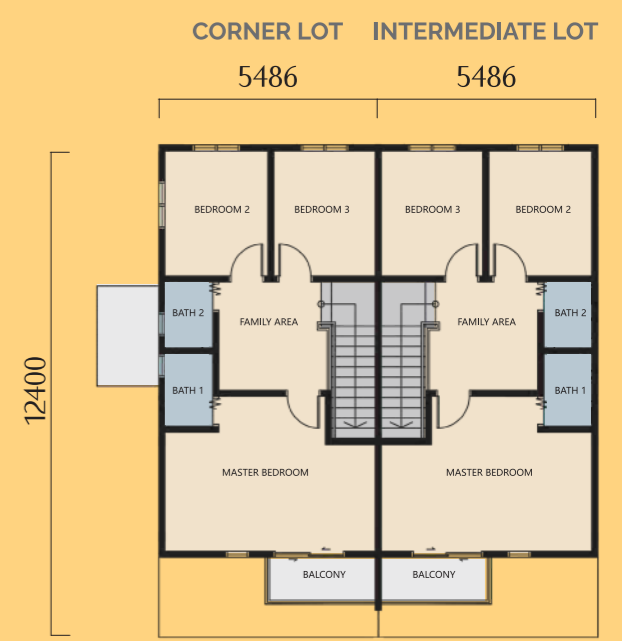


# Floor Plan

STANDARD LAND SIZE 18' x 60' / 68' BUILT-UP AREA 1,324sq.ft.



GROUND FLOOR



FIRST FLOOR

# Jasmine

Where Comfort Meets Affordable Living

JASMINE is a modern home where everyday comfort meets great value. Its practical layout balances style and function, creating a space that works beautifully. More than just a house, JASMINE is a place to grow, connect, and truly feel at home.

4 Bedrooms & 3 Bathrooms

## Specification

- Structure: Reinforced concrete framework
- Wall: Block/ Brick wall with skim coat/ Cement sand plaster  
Concrete wall with skim coat/ Cement sand plaster
- Roofing Covering: Concrete roof tiles / Reinforced concrete slab roof
- Roof Framing: Proprietary truss
- Ceiling: Non-Asbestos ceiling / Skim coat and paint
- Windows: Aluminium framed glass windows
- Doors: Flush door/ Folding door / Sliding door
- Ironmongery: Selected lockset
- Wall Finishes: External Wall: Plaster and paint  
Internal Wall: Plaster and paint  
Bathrooms: 1500mm high ceramic tiles  
Kitchen: 1500mm high ceramic tiles
- Floor Finishes: Car Porch: Cement Render  
Terrace: Cement Render (for Corner Unit & End Unit Type B only)  
Balcony: Cement Render  
Living/Dining/ Kitchen /Bedrooms: Ceramic Tiles  
Staircase: Ceramic Tiles  
Bathrooms: Ceramic Tiles
- Sanitary & Plumbing: Selected sanitary wares and fittings
- Fittings:
- Electrical Installation:

Item	Intermediate Unit	Corner Unit & End Unit Type B	End Unit Type A
Lighting Point	15	16	15
13A Power Point	9	9	9
Fan Point	3	3	3
TV Point	1	1	1

Tele-Communication: One point ready with conduit only  
Fencing: Chain link at 1200mm height

